

CHURCH LAWFORD FIRST SCHOOL



Information for Parents

Church Lawford First School
Church Lawford
Near Rugby - telephone 542147

Head Teacher - Mrs.M.Allison

Chairman of - Rev.C.Henderson
Governors The Vicarage
 Brook Street
 Wolston



We have a lovely hall with lots of
P.E.Apparatus.

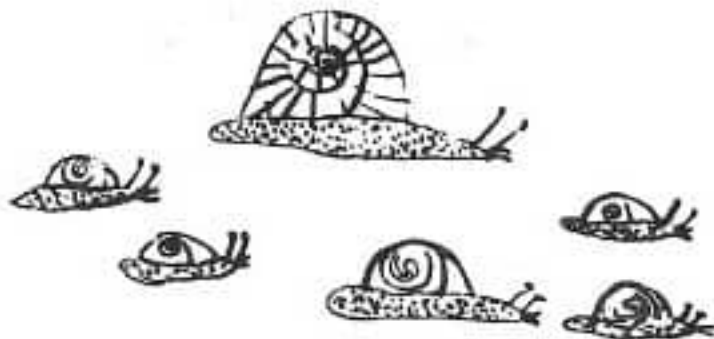
Church Lawford First School is a Church of England Controlled School. At present there are 28 children on roll and we accept children between the ages of 4 and 8 years. Entry is within the year in which the child becomes five. The school year runs from September 1st to August 31st. For example a child born between September 1st 1977 and August 31st 1978 is eligible for school entry in September 1982. The Head Teacher will be pleased to meet by appointment any parents who are considering sending their children to Church Lawford School and to show them the school during or after the school day which is from 9.00 a.m. to 3.10 p.m.

Organisation

The school is divided into two classes. Each child usually spends two years in each class. The children are taught in groups and because of our small numbers we can make special provision for slow learners.



We aim to provide an atmosphere at Church Lawford School where children can learn to express themselves, where they can be themselves, where they can live with each other and with grown-ups, where they can enjoy the present, where they can behave responsibly and prepare as far as is within their scope for the future. A great deal of their learning evolves around the environment which is particularly rich in this area. We take full advantage of the fact that we are near farms, woodland, ponds and river. We invite other schools to share our school and our environment and in doing so, give our own children the added confidence which is brought about by learning to get along with all ages of children from all sorts of backgrounds.



When we went to the wood I thought:

it was spectacular, with a lovely blue sky,

A lovely frosty look all around, you could see the remains of the morning frost on the grass and yellow and brown leaves fluttering down.

I thought it was glorious in the wood.

We found a fallen tree and ^{we} had to climb over it then suddenly snap! bang! the branch that I was on collapsed under me.

Anthony.

Religious education is an integral part of our teaching and has the Religious Education Scheme for Warwickshire as its basis. Parents have the right to request the withdrawal of their children from assemblies if they wish to do so.

Homework

Once children have begun to read, it is very beneficial if they share their new-found and developing skill with parents at home. We therefore encourage our children to take home reading and story books. If children need any further help at home, we will make provision for homework.

Pastoral Care

All members of staff are caring people who have the welfare of the children very much at heart.

Discipline

Our policy on discipline is one of firmness with kindness.

Uniform

Our colours are grey, royal blue and white and we would hope that parents will find it fairly easy to buy clothing in these colour combinations. Each child needs a draw-string pump bag, pumps, shorts and a T-shirt for P.E. No special colour is required for these items and they can remain in school in the pump-bag.

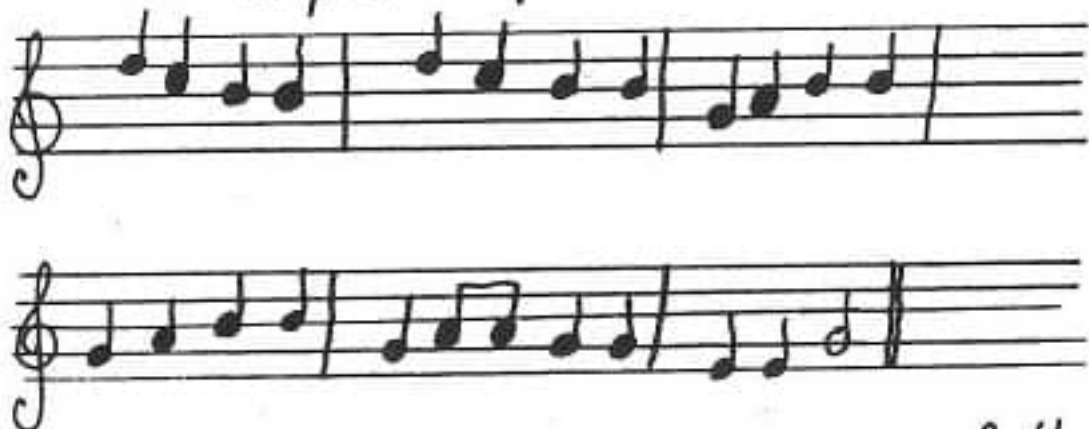


Swimming

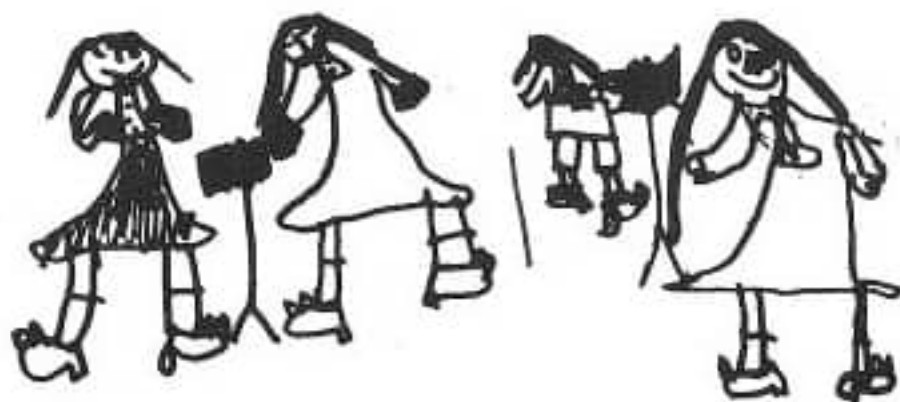
All children have the opportunity to go swimming on Thursday afternoons. The cost is ^{65p}~~50p~~ for swimmers and ^{35p}~~30p~~ for spectators - This includes the bus-fare to the Sports Centre and back.

The third and fourth year children learn to play the recorder. The school supplies recorders but many children like to buy their own instrument.

Kilpeck Special



Beth



Amanda.

Dinners

We have wholesome cooked meals supplied to the school at a cost of ^{01p} ~~55p~~ per day (~~£2.75~~ ^{£3.05} per week). Please send the money in an envelope on Mondays to enable our Secretary to bank it on Monday afternoons.



Medical

The children have one medical soon after entry to school and there are regular inspections of teeth, hair and eyes. Please send a note giving a reason for absence after a child has been away from school.

Holidays

Please inform us of holidays and appointments so that appropriate marks can be put in the register. There are three occasional days each year awarded by the Governors.

Your child's progress

There will be one open evening and one written report each year. Parents who wish to discuss their child may make an appointment with staff.

During the course of the year parents will receive letters giving dates of activities and holiday dates. I hope this information will prove useful and I shall be happy to answer any further queries.

When I went to the wood I found
A twig and it had Orange spots on.
The Spots are a fungus a very small
Fungus. Thow it was Very brittle. The
Spots are as small as the tip of
my pen. They are like little sweets.
Some of them are joined to gether.

